

Quiz/Test DATE:

Today's Section:

Algebra I 100pt Daily Path to Success

Full Student Name:

1/2 5/6 7/8

Date:

Opening Checklist (15 points)

Initials

1. I had my math notes folder and daily papers ON MY DESK by the time class began.
2. I had been using a SHARPENED pencil by the time class began.
3. I had FINISHED copying the objective and had STARTED defining the Word of the Day by the time class began.

/5

/5

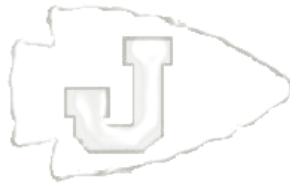
/5

Do Now (10 points) – Copy the Objective and define the Word of the Day.

Initials

Obj:

Word of
the Day
& Defn:



/10

Skill Review (10 points) – Show ALL work necessary.

Initials

/10

Notes (20 points)

Initials

Completed Notes Page/Activity

/10

Participated & Earned the Appropriate Number of Teacher Checkmarks

/10

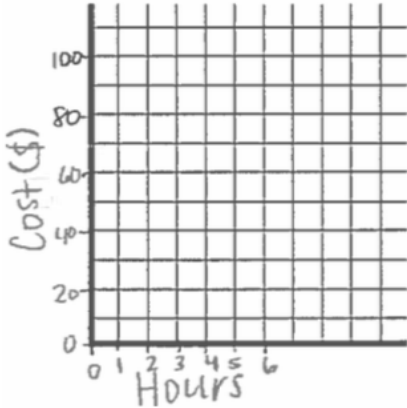
Exit Ticket (10 points) – Complete INDEPENDENTLY and SILENTLY.

Initials

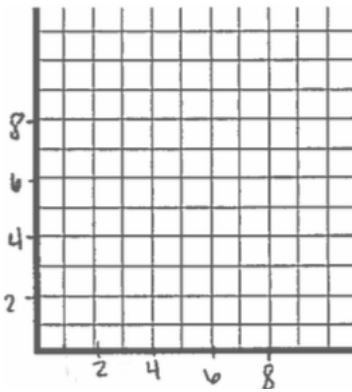
/10

Define x and y . Model the scenario with a graph and a **slope-intercept** equation. Answer the question using **both** the equation and the graph.

1) An electrician charges \$50 for coming to perform a service, plus \$20 for every hour she works on the service. How much does a 3-hour service cost?



2) A student has a \$10 in his wallet and spends \$1 on his favorite bag of chips each time he buys chips. If he only buys chips, how much money is left in his wallet after he has bought chips 6 times? (Don't forget to label the axes.)



Log into IXL. Work on Math → Algebra 1 → Q3 & S10. Get to 40 for full points today. Get to 80 for homework.

What's your IXL username?

What score did you finish at for Q3 today?

What score did you finish at for S10 today?

When do you plan to log back into IXL to get to 80? (If you don't have Internet at home, what tutoring time will you attend?)

