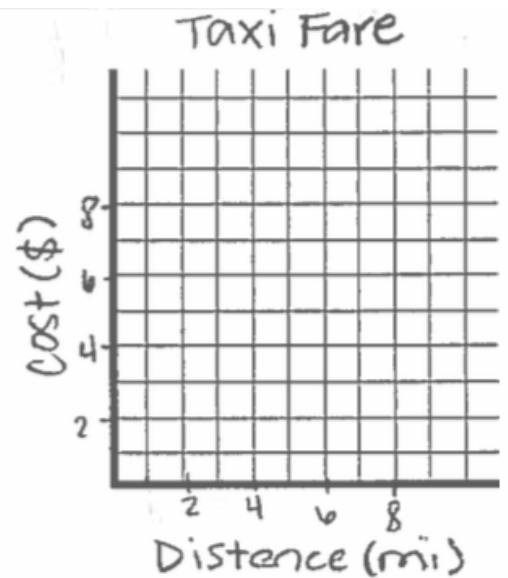


Slope-Intercept Form Word Problems

1) A taxi charges an initial fee of \$1. The taxi also charges \$2 for every mile traveled. Model the scenario with a graph and equation.

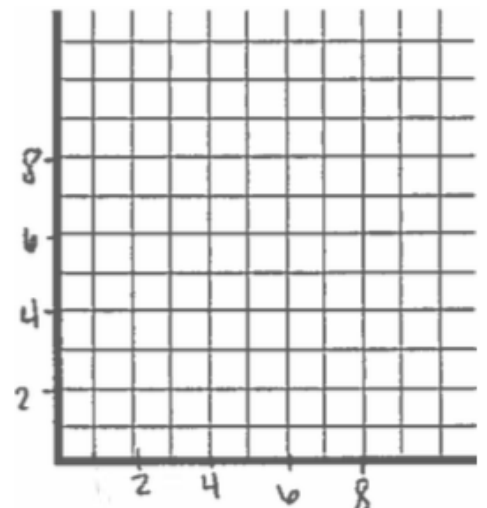


What is the cost of a 4-mile ride?

How to Write the Equation & Define Variables

y	=	m	x	+	b

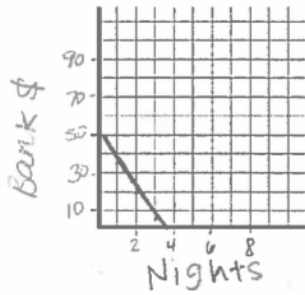
2) A woman puts \$10 on a gift card for gas. Gas costs \$2 per gallon. Model the scenario with a graph and an equation.



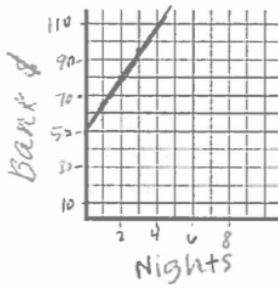
How much is left on the card after she pumps 6 gallons?

Multiple Choice Practice - Slope Intercept Form

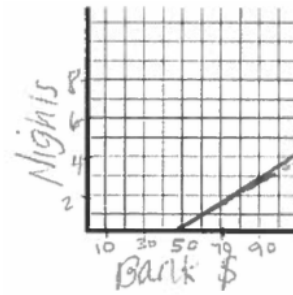
1) Briana starts with \$50 in her savings account. She earns \$15 per night house-sitting for a neighbor who is out of town. Briana deposits all her money and makes no withdrawals. Which graph best describes the amount of money, m , in her bank account after n nights? *Justify.*



a)



b)



c)

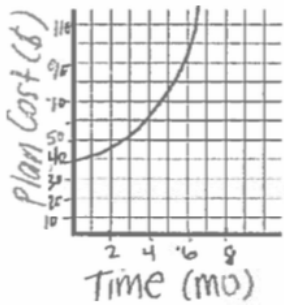
Which equation best describes the scenario?

(a) $m = 50 + 15n$

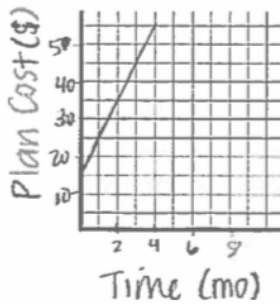
(b) $n = 50 + 15m$

(c) $m = 15 + 50n$

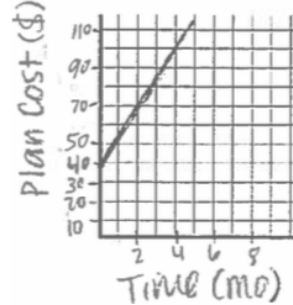
2) A cell phone plan costs \$40 to buy a new phone and then \$15 per month for unlimited texting. Which graph describes the cost, C , of the plan over time, t ? *Justify.*



a)



b)



c)

Which equation best describes the scenario?

(a) $C = 15m + 40$

(b) $C = 40m + 15$

(c) $C = 55m$